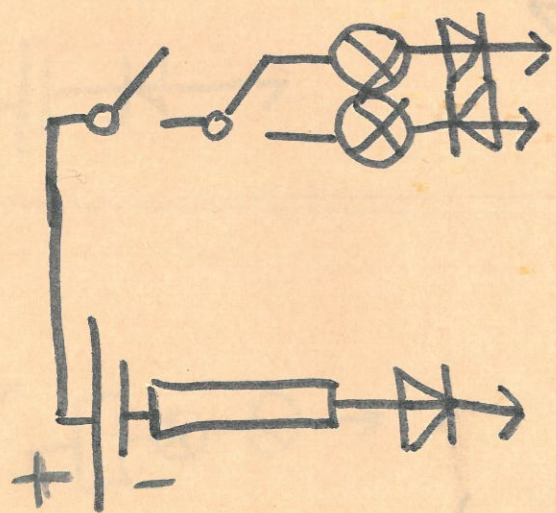


ELEKTRONICKÁ STAVEBNICA

1. časť
ŤAŽŠIE OBVODY
+

2. časť
NAJŤAŽŠIE OBVODY

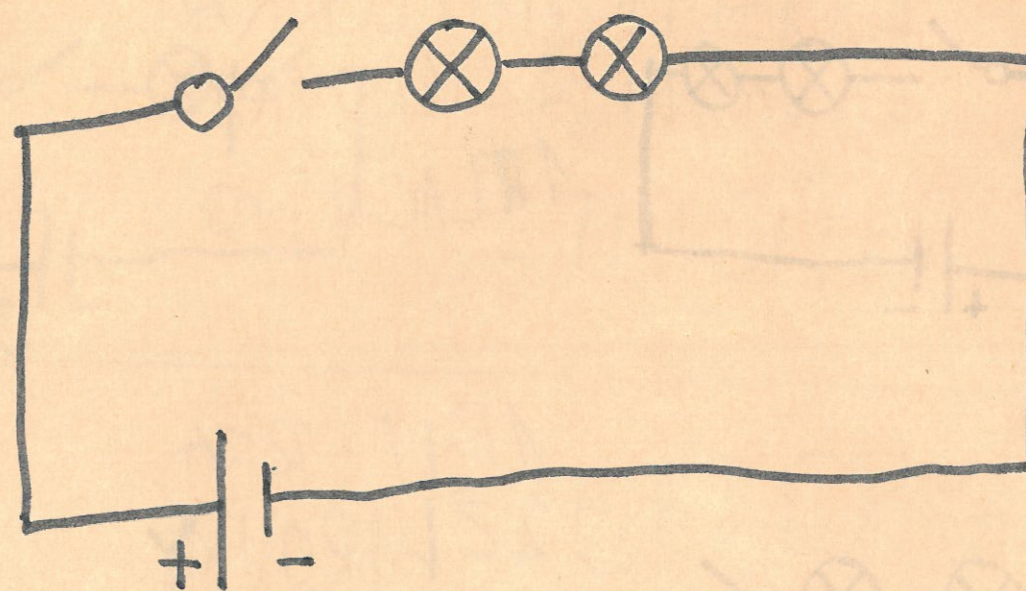


2. časť PRACOVNÁ ČASŤ
ŤAŽŠIE A NAJŤAŽŠIE OBVODY.

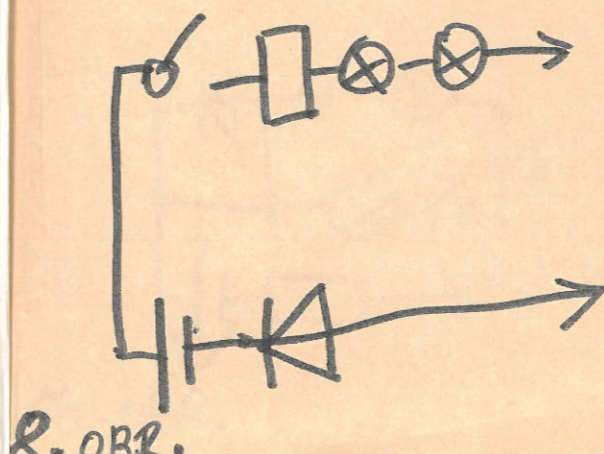
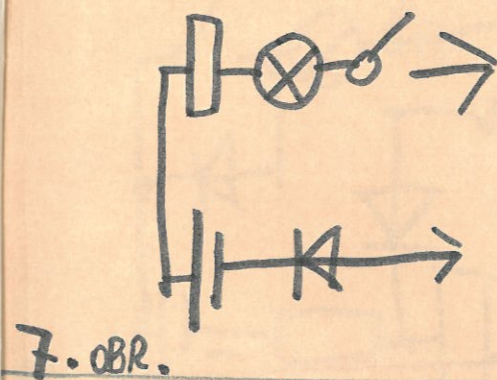
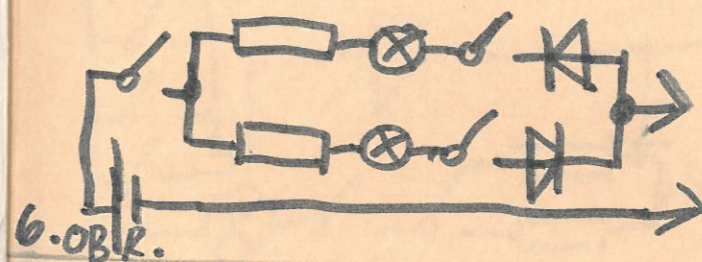
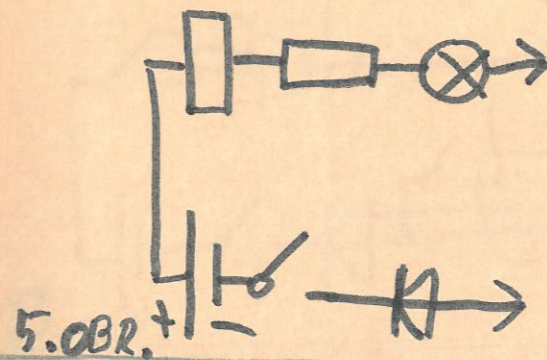
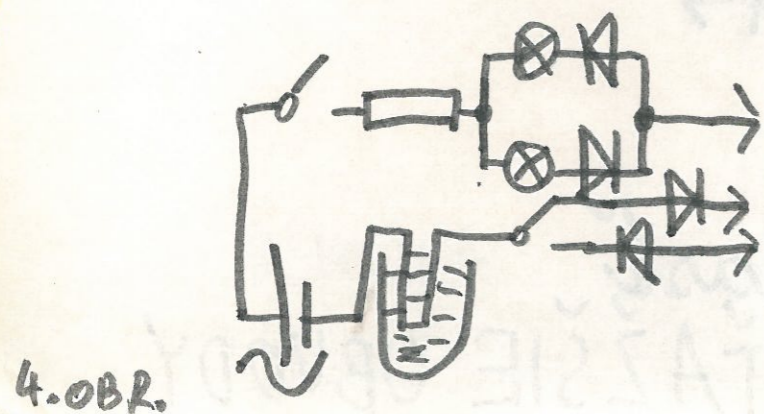
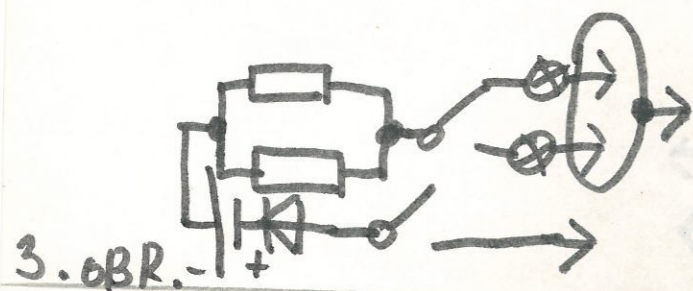
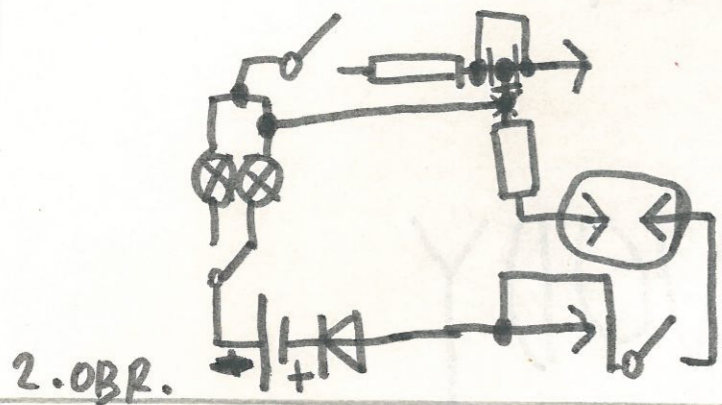
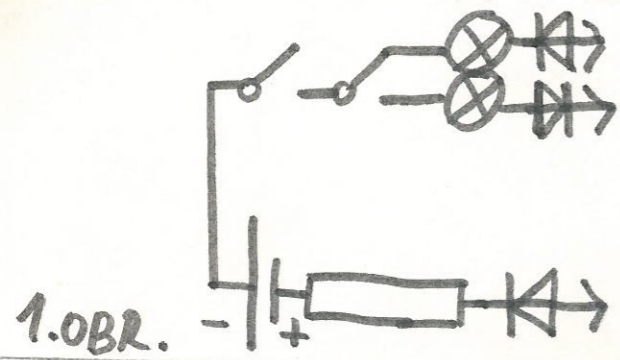
ELEKTRONICKÁ STAVEBNICA

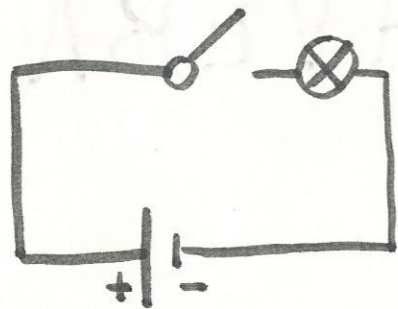
1. ČASŤ
LAHKÉ OBVODY

2. ČASŤ
ŤAŽKÉ OBVODY

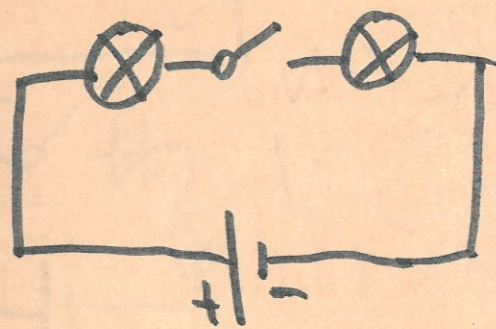


1. časť
ŤAŽKÉ A LAHKÉ OBVODY.

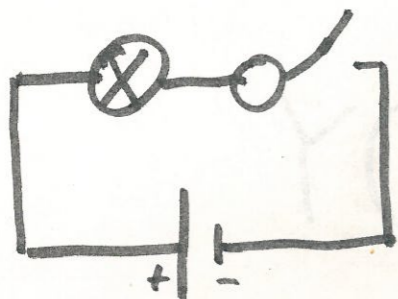




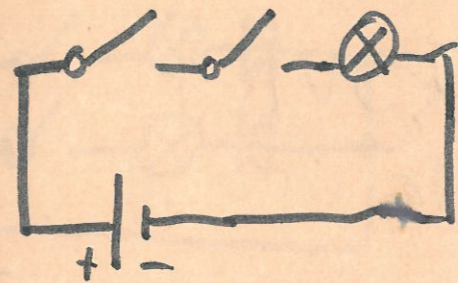
1 BATERKA
1 ŽIAROVKA
1 TLAČÍTKO



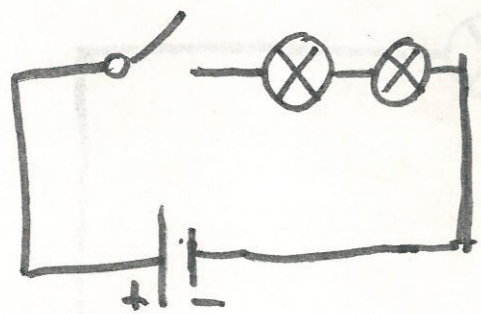
1 BATERKA
2 ŽIAROVKY
1 TLAČÍTKO



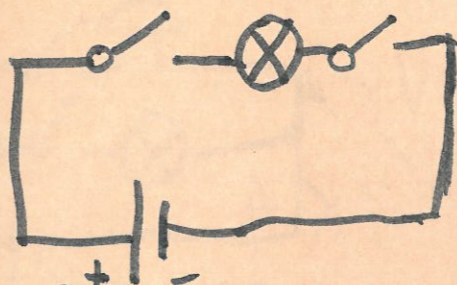
1 BATERKA
1 ŽIAROVKA
1 TLAČÍTKO



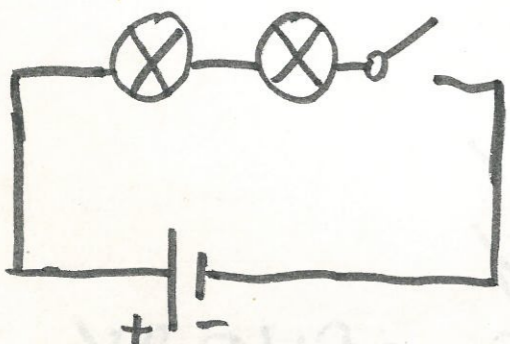
1 BATERKA
1 ŽIAROVKA
2 TLAČÍTKA



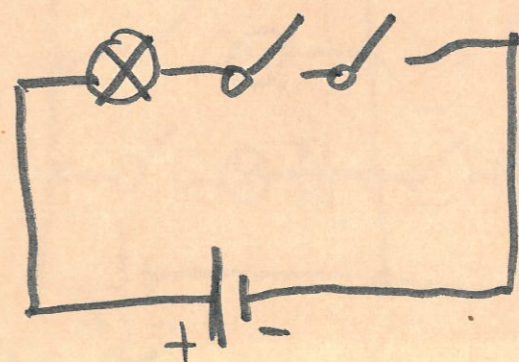
1 BATERKA
2 ŽIAROVKY
1 TLAČÍTKO



1 BATERKA
1 ŽIAROVKA
2 TLAČÍTKA



1 BATERKA
2 ŽIAROVKY
1 TLAČÍTKO



1 BATERKA
1 ŽIAROVKA
2 TLAČÍTKA

1. OBR.

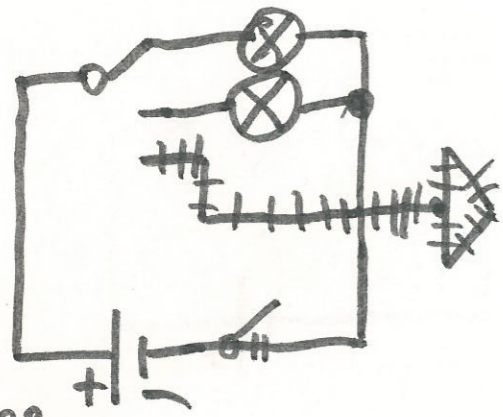
3. OBR.

4. OBR.

5. OBR.

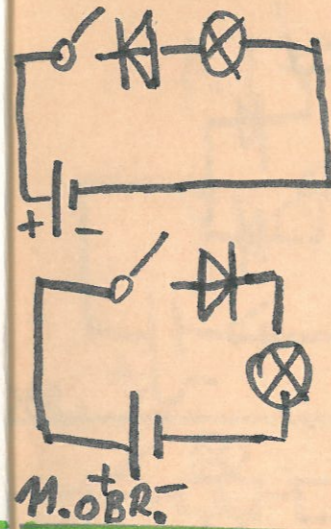
2. OBR.

6. OBR.



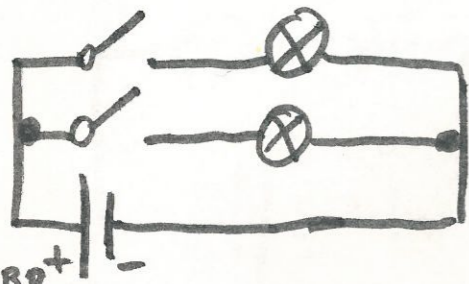
7. OBR.

1 BATERKA
 1 PREPÍNAČ
 2 ŽIAROVKY
 1 TLACÍTKO



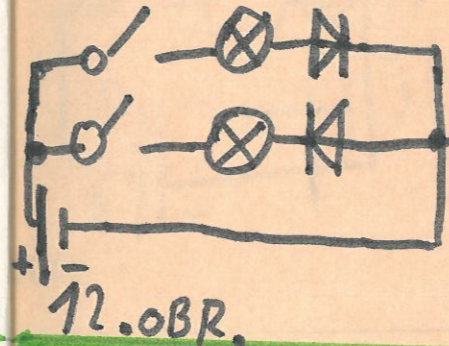
11. OBR.

1 BATERKA
 1 TLACÍTKO
 1 ŽIAROVKA
 1 DIODAKY 132



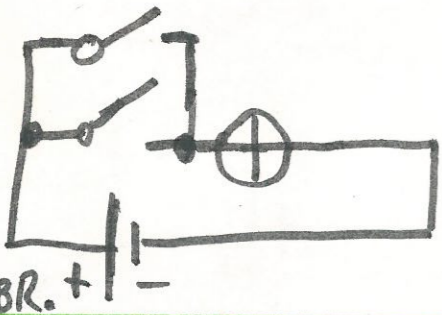
8. OBR.

1 BATERKA
 2 ŽIAROVKY
 2 TLACÍTKA



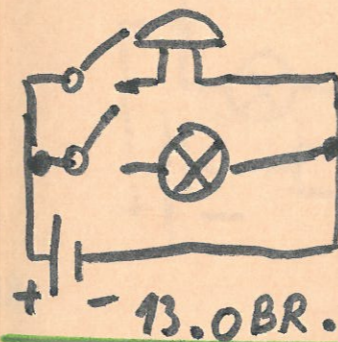
12. OBR.

1 BATERKA
 2 TLACÍTKA
 2 ŽIAROVKY
 2 DIODY KY 132



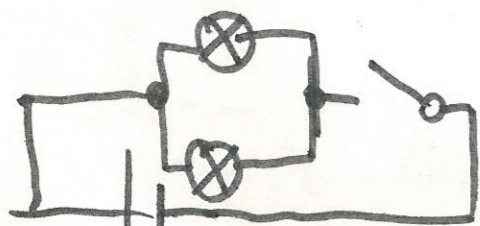
9. OBR.

1 BATERKA
 1 ŽIAROVKA
 2 TLACÍTKA



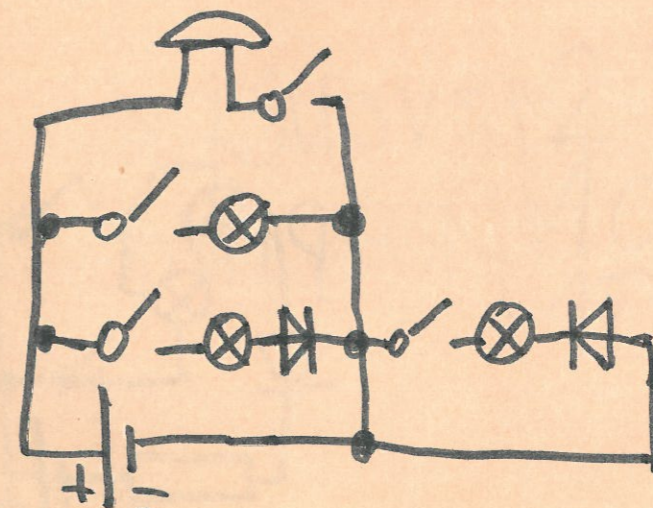
13. OBR.

1 BATERKA
 1 ŽIAROVKA
 1 ZVONČEK
 2 TLACÍTKA



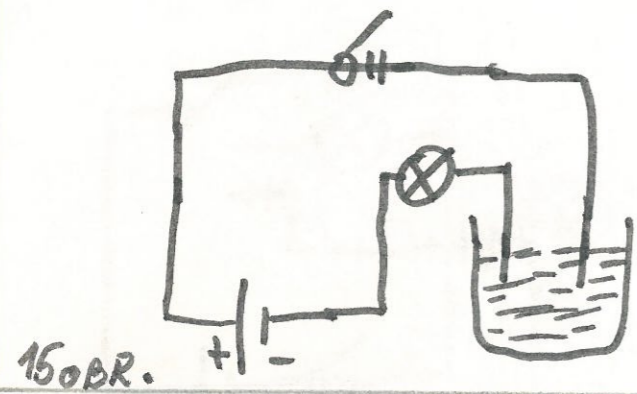
10. OBR.

1 BATERKA
 2 ŽIAROVKY
 1 TLACÍTKO

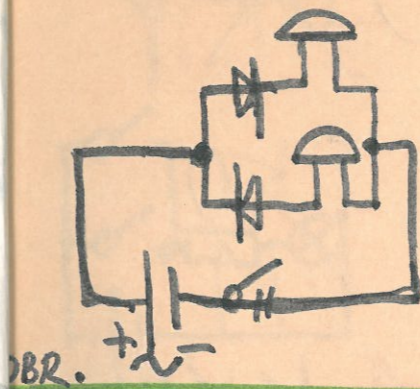


14. OBR.

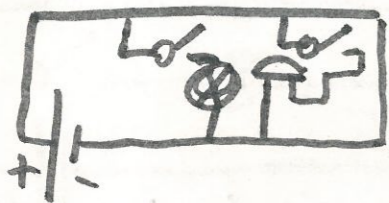
1 BATERKA
 4 TLACÍTKA
 1 ZVONČEK
 3 ŽIAROVKY
 2 DIODI KY 132



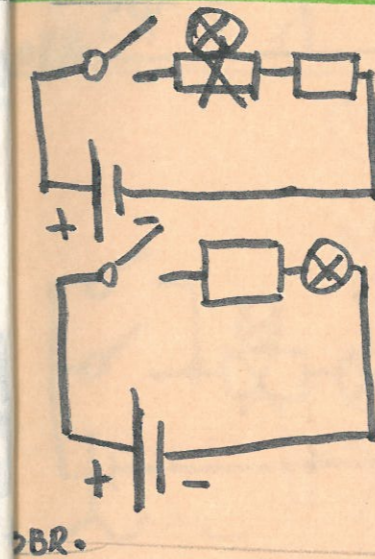
1 ŽIAROVKA
1 POHÁR VODY



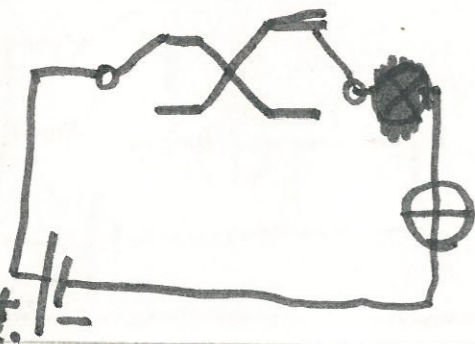
2 ZVONČEKY
2 DIÓDY KY 132



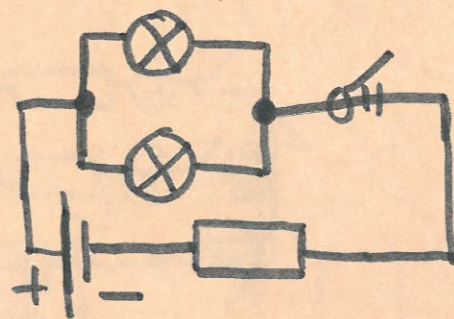
1 ŽIAROVKA
1 ZVONČEK
2 TLACÍTKA



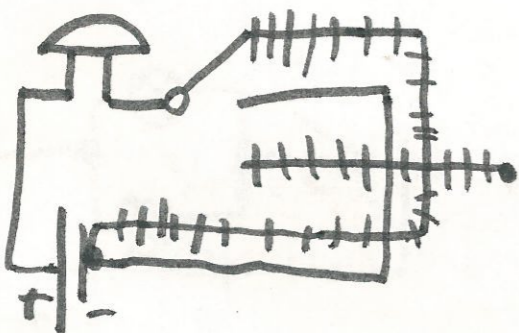
1 ŽIAROVKA
1 ODPOR 1M
1 TLACÍTKO
1 BATERKA 1,5V



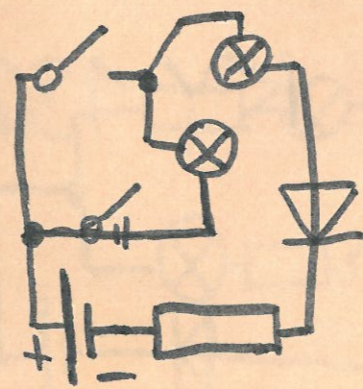
1 ŽIAROVKA
2 TLACÍTKA



2 ŽIAROVKY
1 ODPOR 1M
1 TLACÍTKO



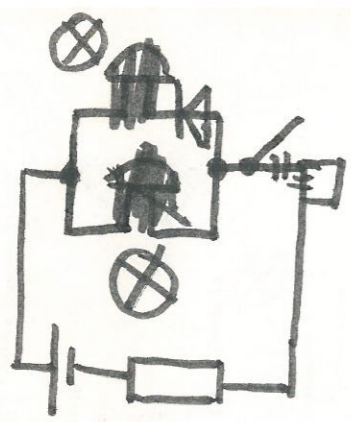
1 ZVONČEK
1 PREPÍNAČ



2 ŽIAROVKY
1 ODPOR 3M
1 TLACÍTKO

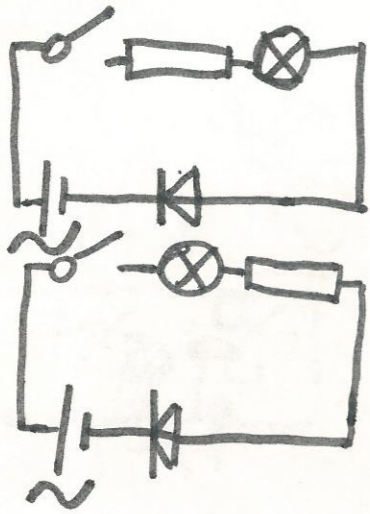
18 OBR.

OBR. ~



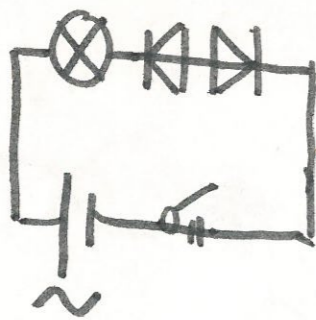
23. obr.

2 ŽIAROVKY
1 TLAČÍTKO
1 ODPOR 1M
1 DIODA KY 132



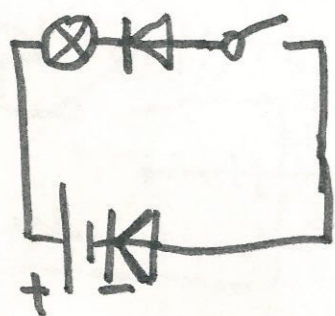
24. obr.

1 TLAČÍTKO
1 ODPOR 1M
1 ŽIAROVKA
1 DIODA KY 132



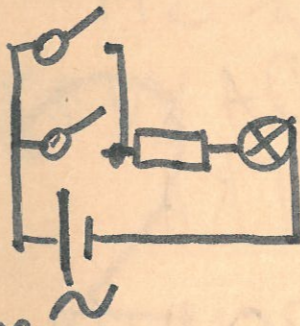
25. obr.

1 ŽIAROVKA
1 TLAČÍTKO
2 DIODY KY 132



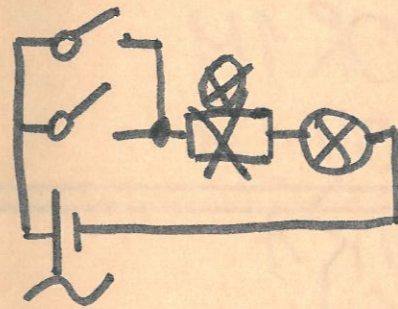
26. obr.

1 ŽIAROVKA
1 TLAČÍTKO
1 DIODA KY 132



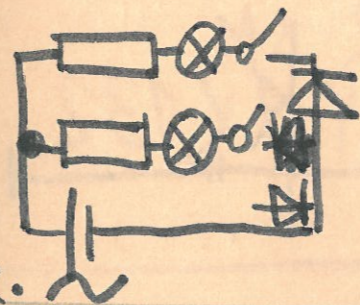
obr.

2 TLAČÍTKA
1 ODPOR 1M
1 ŽIAROVKA



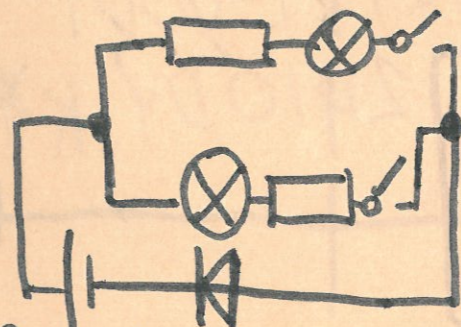
obr.

2 TLAČÍTKA
2 ŽIAROVKY



obr.

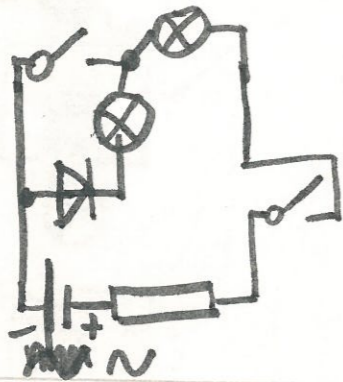
2 ODPORY 3M
2 ŽIAROVK
2 TLAČÍTKA
2 DIODY KY 132



obr.

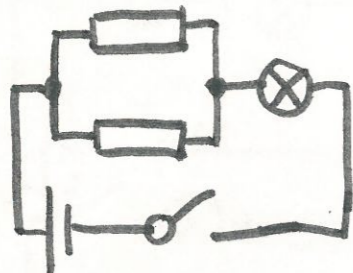
2 ŽIAROVKY
2 ODPORY 3M
2 TLAČÍTKA
1 DIODA KY 132

31. obr.



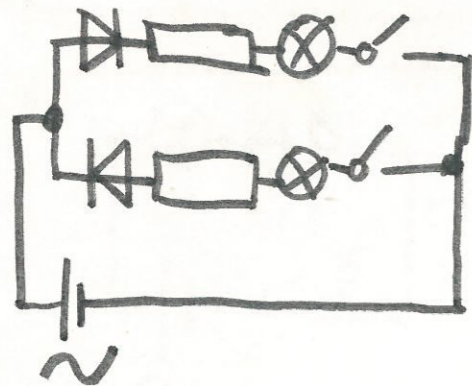
2 ŽIAROVKY
 1 ODPOR 3M
 1 DYOĐA KY 13
 2 TLACITKA

32. obr.



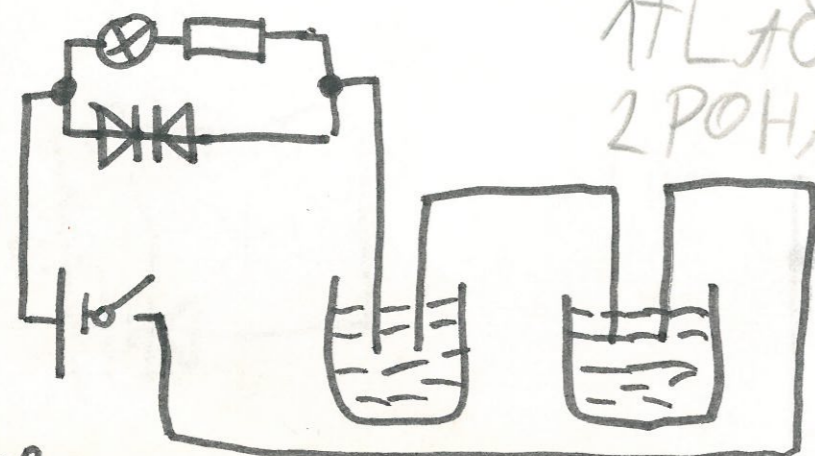
1 ŽIAROVKA
 1 TLACITKO
 1 ODPOR 1M
 1 ODPOR 3M

33. obr.



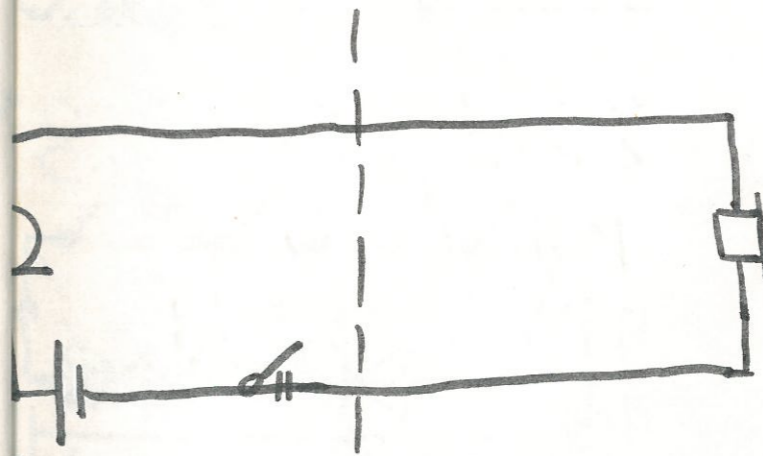
1 ŽIAROVKA
 2 TLACITKA
 1 ODPOR 1M
 1 ODPOR 3M
 2 DYOĐY KY 132

34. obr.

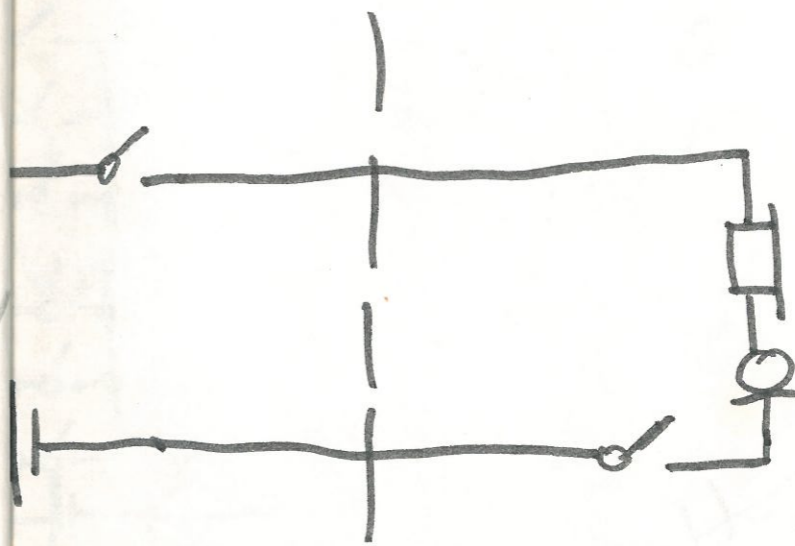


1 ŽIAROVKA
 1 ODPOR 1M
 1 TLACITKO
 2 POHAAREVODY
 2 DYOĐY KY

2. časť

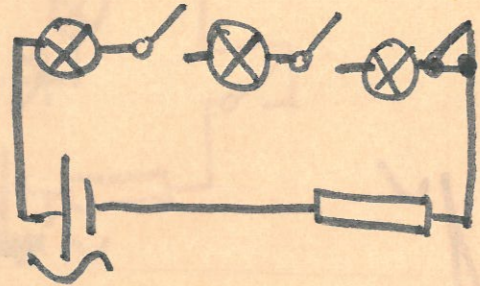


1 MIKROFÓN
 1 REPRODUKTOR
 1 TLACITKO

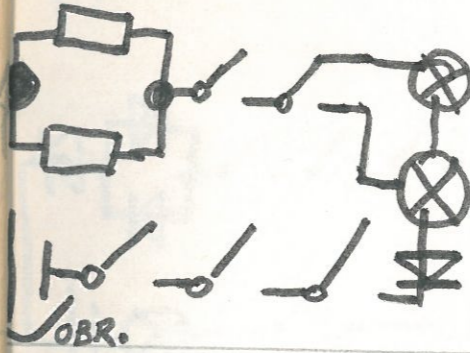


2 REPRODUKTOR Y
 2 MIKROFÓNY
 2 TLACITKA

37. obr.

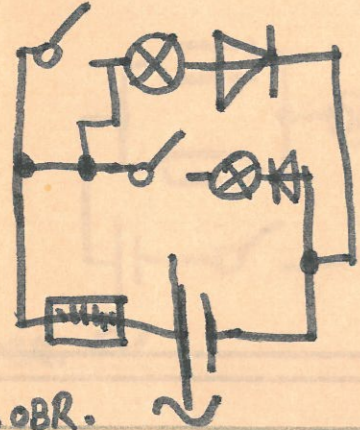


3 ŽIAROVKY
2 TLAČÍTKA
1 ODPOR 3M

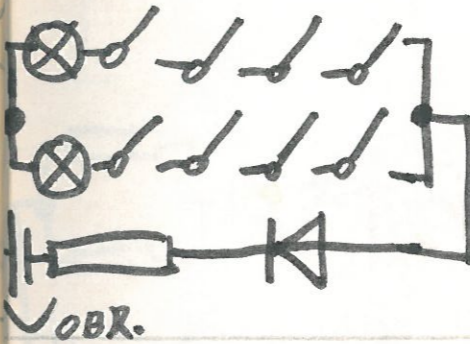


5 TLAČÍTKO
1 ODPOR 1M
1 ODPOR 3M

38. obr.

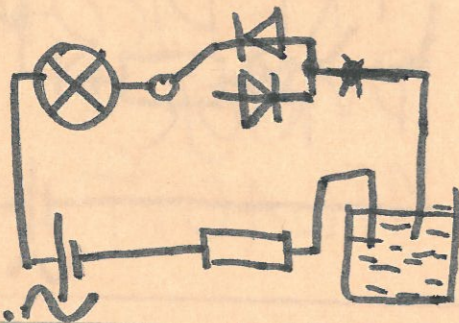


2 ŽIAROVKY
2 DIÓDY KY 132
2 TLAČÍTKA
1 ODPOR 3M

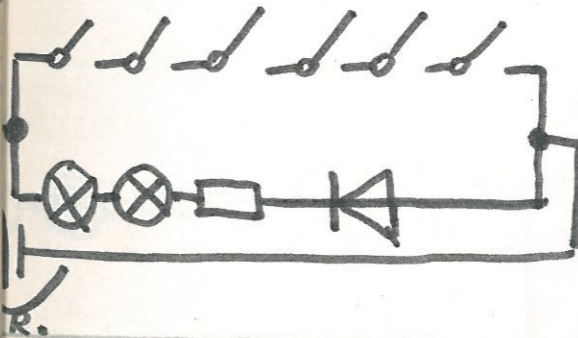


8 TLAČÍTKO
1 ODPOR 3M

39. obr.

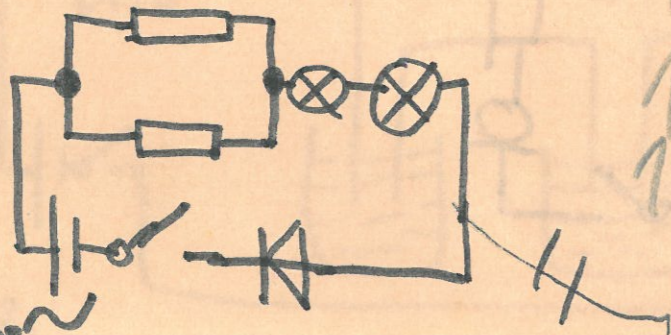


2 DIÓDY KY 13
1 ODPOR 1M
1 PŘEPÍNAČ
1 ŽIAROVKA

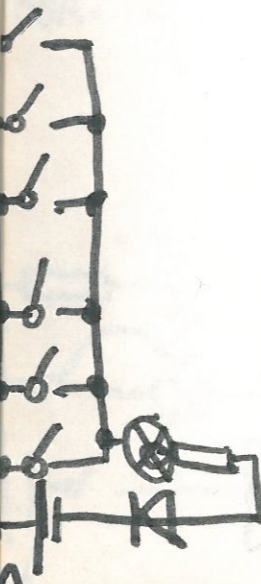


6 TLAČÍTKO
1 ODPOR 3M

40. obr.



2 ŽIAROVKY
1 DIÓDA KY 132
1 TLAČÍTKO
1 ODPOR 3M
1 ODPOR 1M



6 TLAČÍTKO
1 ODPOR 1M

3 ŽIAROVKY

