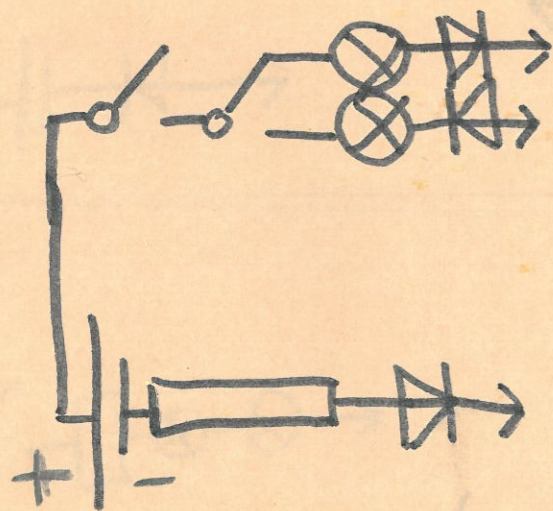


# ELEKTRONICKÁ STAVEBNICA

1. časť  
ŤAŽŠIE OBVODY  
+

2. časť  
NAJŤAŽŠIE OBVODY

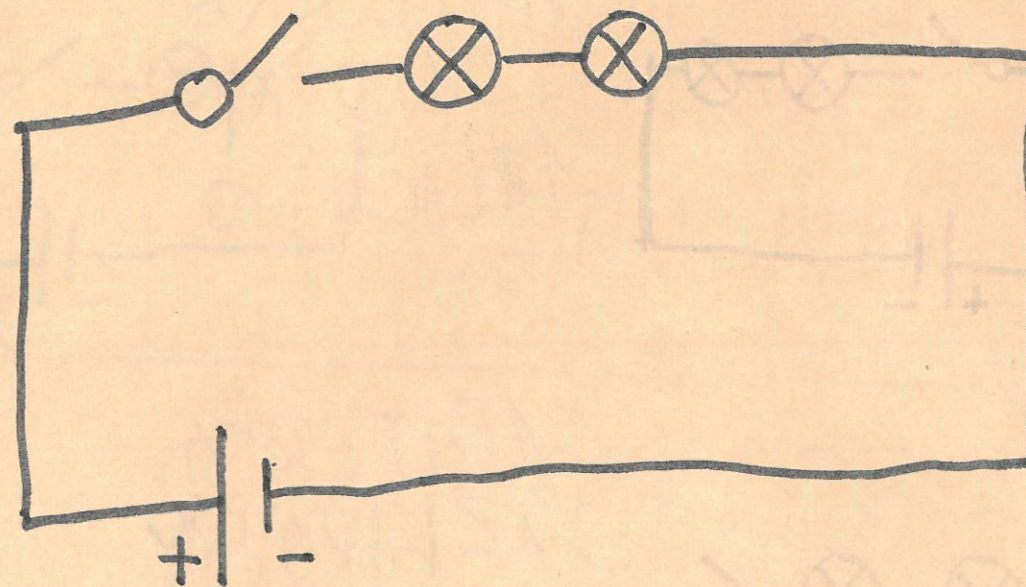


2. časť PRACOVNÁ ČASŤ  
ŤAŽŠIE A NAJŤAŽŠIE OBVODY.

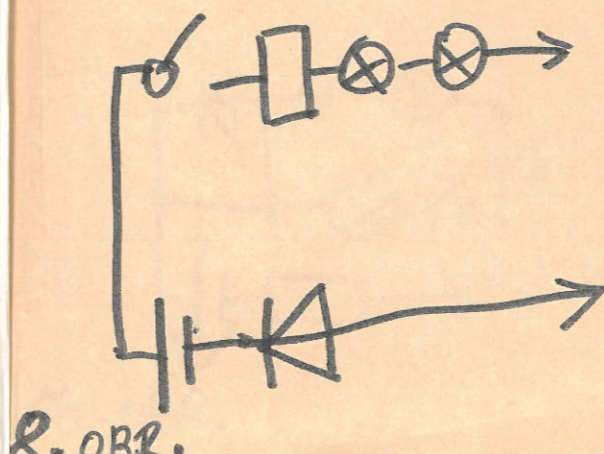
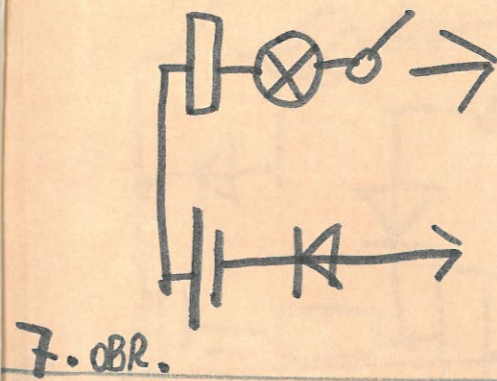
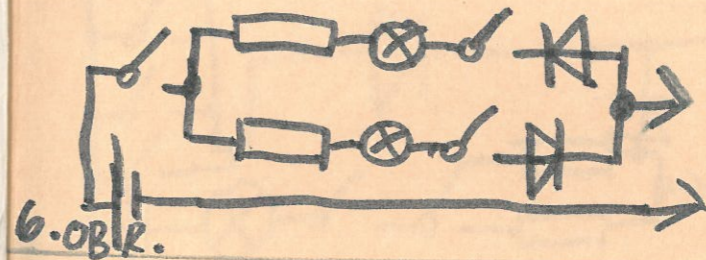
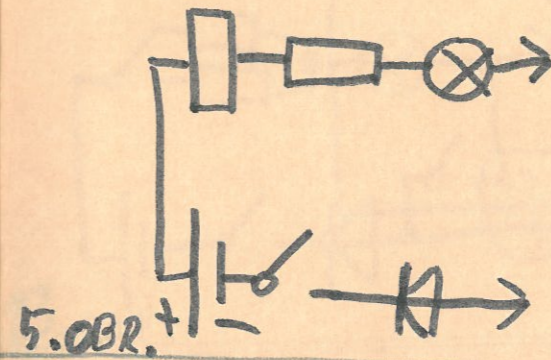
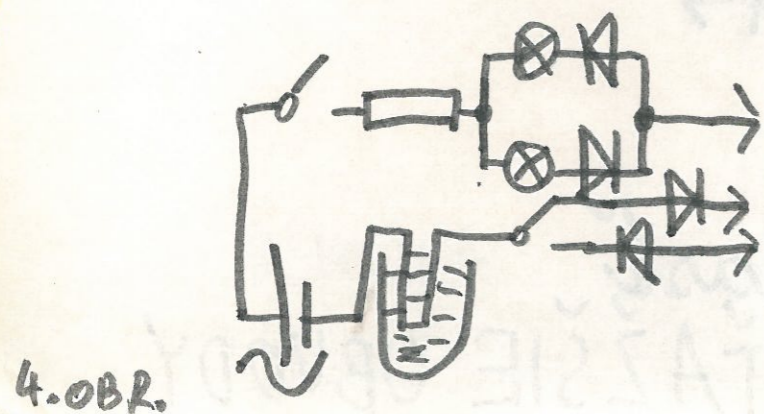
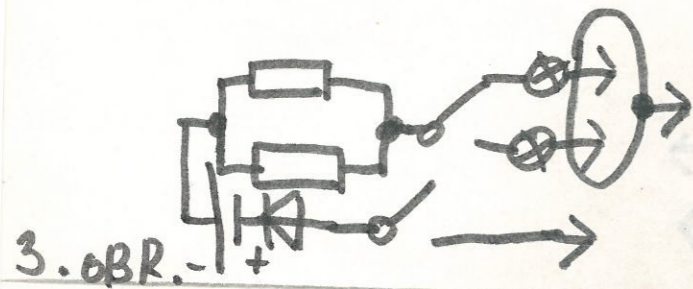
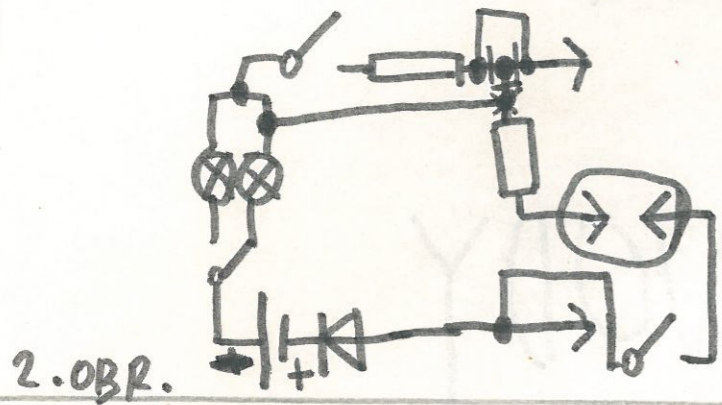
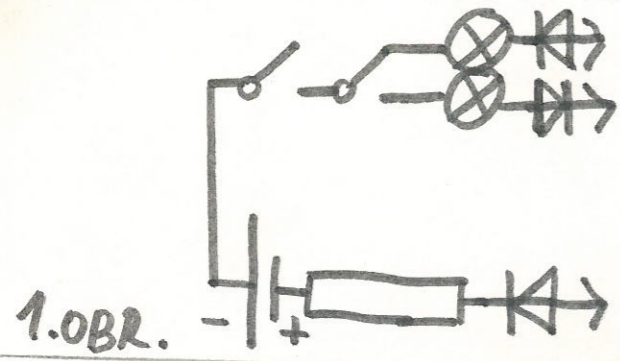
# ELEKTRONICKÁ STAVEBNICA

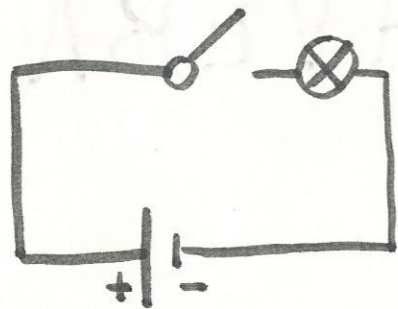
1. ČASŤ  
LAHKÉ OBVODY

2. ČASŤ  
ŤAŽKÉ OBVODY

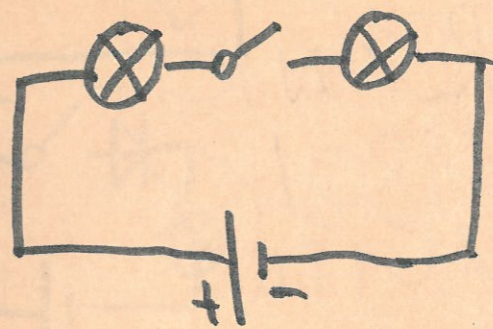


1. časť  
ŤAŽKÉ A LAHKÉ OBVODY.

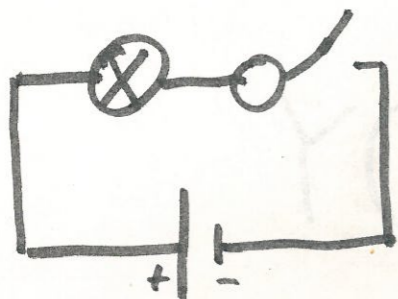




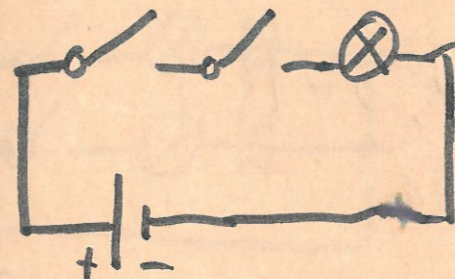
1 BATERKA  
1 ŽIAROVKA  
1 TLAČÍTKO



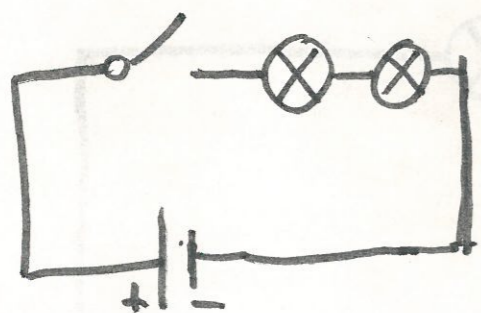
1 BATERKA  
2 ŽIAROVKY  
1 TLAČÍTKO



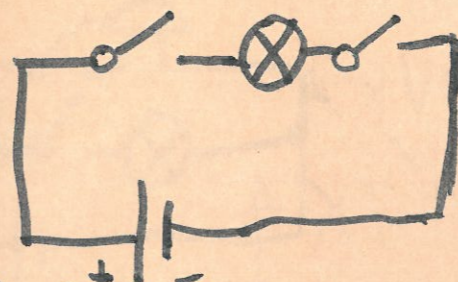
1 BATERKA  
1 ŽIAROVKA  
1 TLAČÍTKO



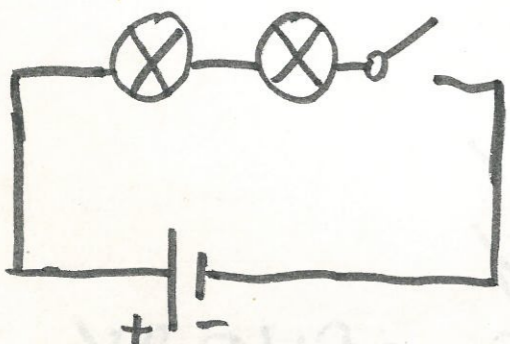
1 BATERKA  
1 ŽIAROVKA  
2 TLAČÍTKA



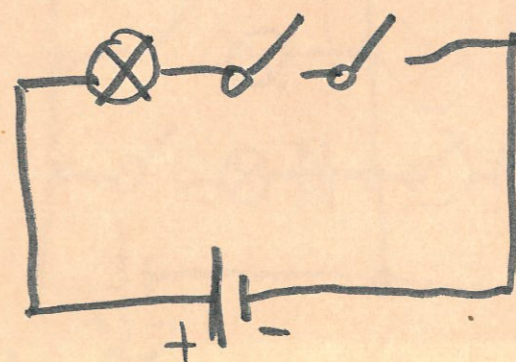
1 BATERKA  
2 ŽIAROVKY  
1 TLAČÍTKO



1 BATERKA  
1 ŽIAROVKA  
2 TLAČÍTKA



1 BATERKA  
2 ŽIAROVKY  
1 TLAČÍTKO



1 BATERKA  
1 ŽIAROVKA  
2 TLAČÍTKA

1. OBR.

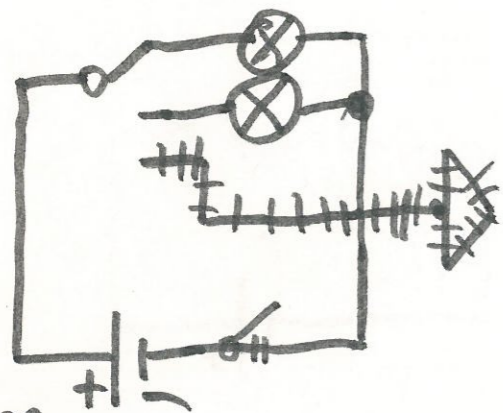
3. OBR.

4. OBR.

5. OBR.

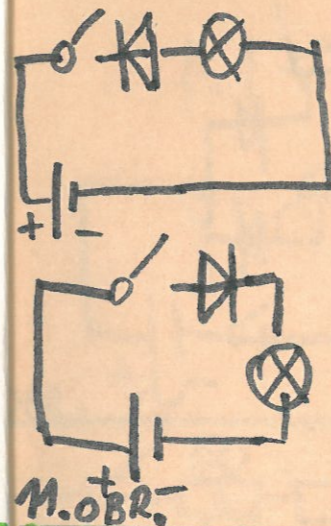
2. OBR.

6. OBR.



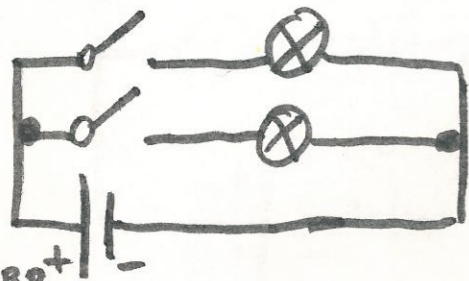
7. OBR.

1 BATERKA  
 1 PREPÍNAČ  
 2 ŽIAROVKY  
 1 TLACÍTKO



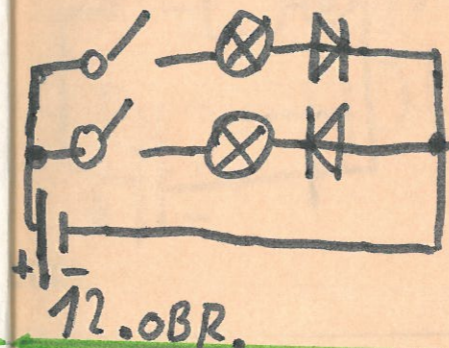
11. OBR.

1 BATERKA  
 1 TLACÍTKO  
 1 ŽIAROVKA  
 1 DIODAKY 132



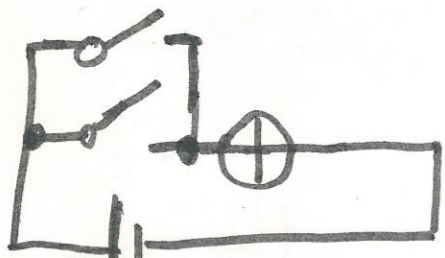
8. OBR.

1 BATERKA  
 2 ŽIAROVKY  
 2 TLACÍTKA



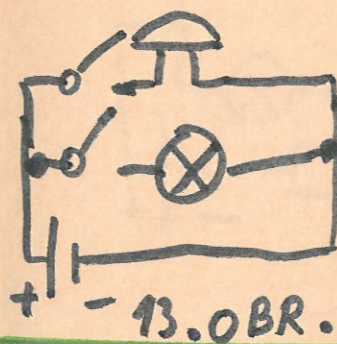
12. OBR.

1 BATERKA  
 2 TLACÍTKA  
 2 ŽIAROVKY  
 2 DIODY KY 132



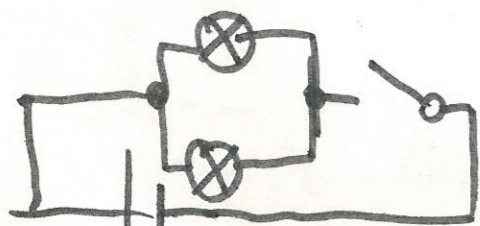
9. OBR.

1 BATERKA  
 1 ŽIAROVKA  
 2 TLACÍTKA



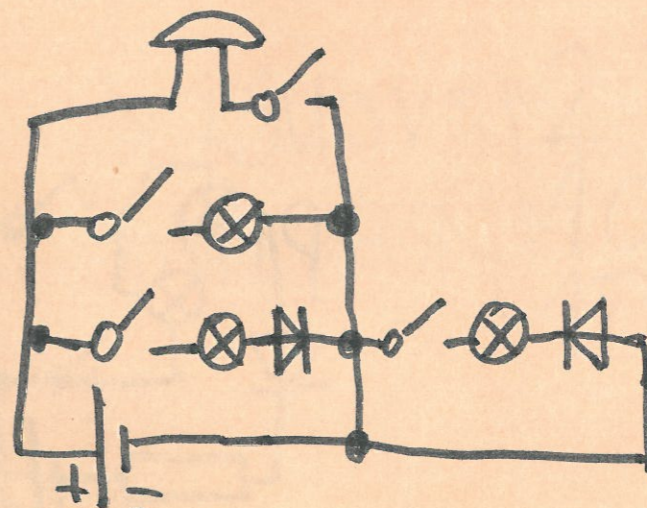
13. OBR.

1 BATERKA  
 1 ŽIAROVKA  
 1 ZVONČEK  
 2 TLACÍTKA



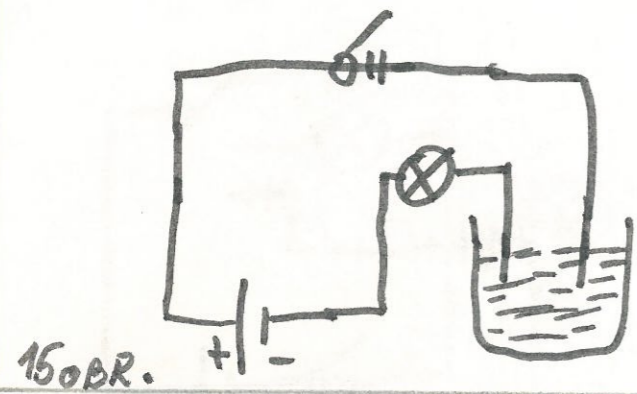
10. OBR.

1 BATERKA  
 2 ŽIAROVKY  
 1 TLACÍTKO

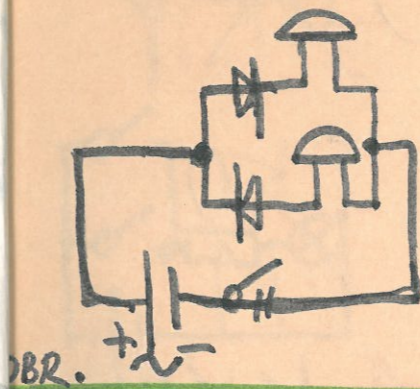


14. OBR.

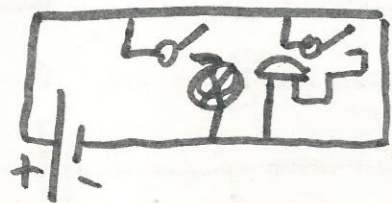
1 BATERKA  
 4 TLACÍTKA  
 1 ZVONČEK  
 3 ŽIAROVKY  
 2 DIODI KY 132



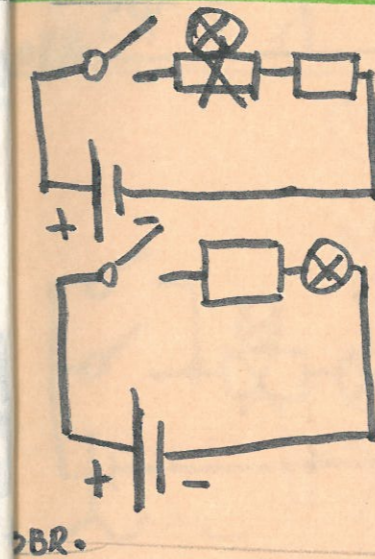
1 ŽIAROVKA  
1 POHÁR VODY



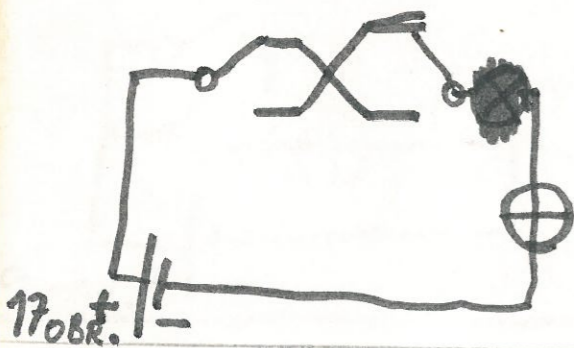
2 ZVONČEKY  
2 DIÓDY KY 132



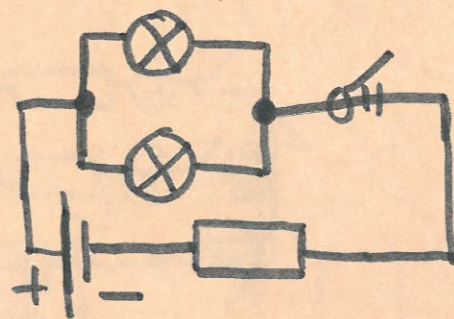
1 ŽIAROVKA  
1 ZVONČEK  
2 TLACÍTKA



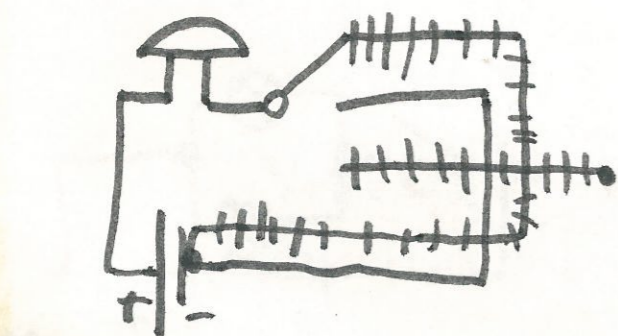
1 ŽIAROVKA  
1 ODPOR 1M  
1 TLACÍTKO  
1 BATERKA 1,5V



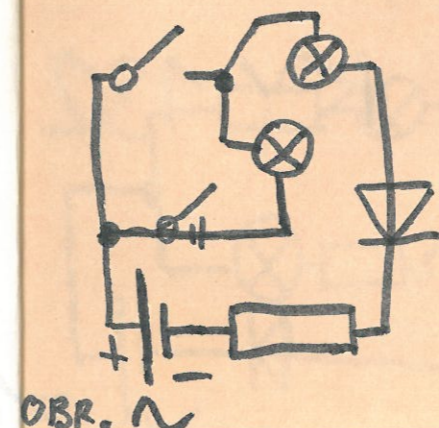
1 ŽIAROVKA  
2 TLACÍTKA



2 ŽIAROVKY  
1 ODPOR 1M  
1 TLACÍTKO



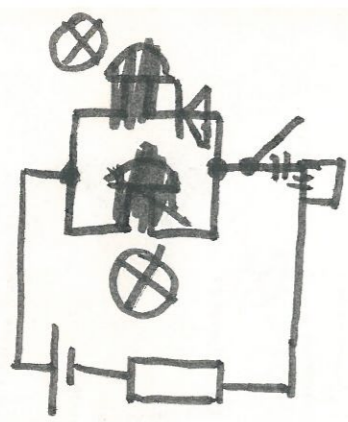
1 ZVONČEK  
1 PREPÍNAČ



2 ŽIAROVKY  
1 ODPOR 3M  
1 TLACÍTKO

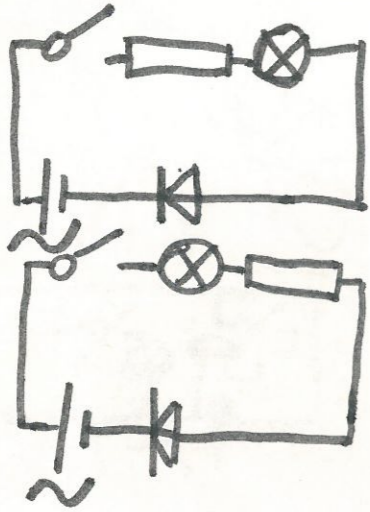
18 OBR.

OBR. ~



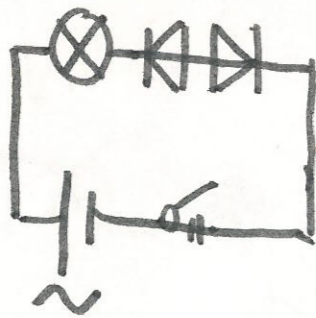
23. obr.

2 ŽIAROVKY  
1 TLAČÍTKO  
1 ODPOR 1M  
1 DIODA KY 132



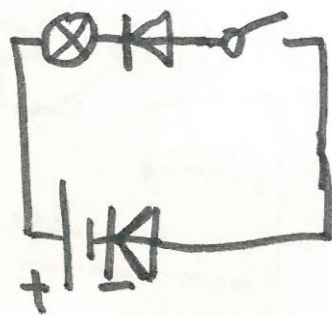
24. obr.

1 TLAČÍTKO  
1 ODPOR 1M  
1 ŽIAROVKA  
1 DIODA KY 132



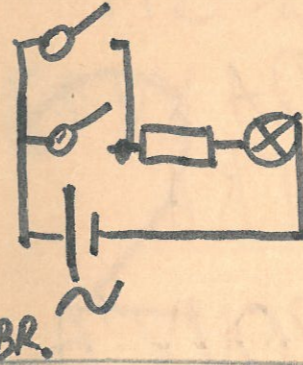
25. obr.

1 ŽIAROVKA  
1 TLAČÍTKO  
2 DIODY KY 132



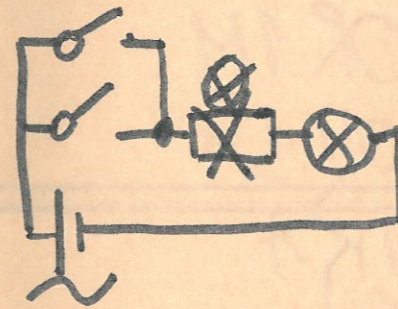
26. obr.

1 ŽIAROVKA  
1 TLAČÍTKO  
1 DIODA KY 132



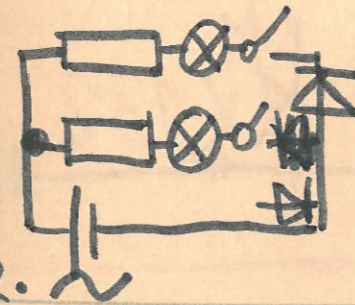
obr.

2 TLAČÍTKA  
1 ODPOR 1M  
1 ŽIAROVKA



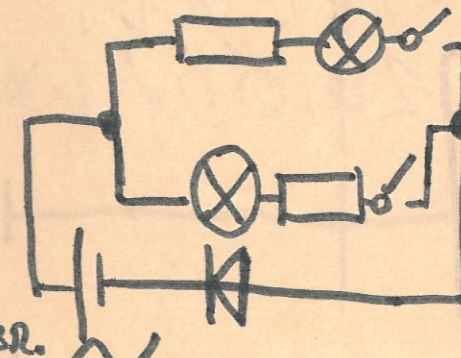
obr.

2 TLAČÍTKA  
2 ŽIAROVKY



obr.

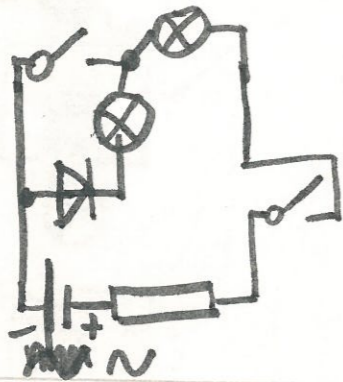
2 ODPORY 3M  
2 ŽIAROVK  
2 TLAČÍTKA  
2 DIODY KY 132



obr.

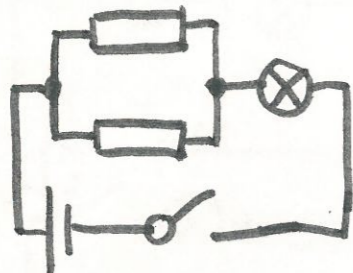
2 ŽIAROVKY  
2 ODPORY 3M  
2 TLAČÍTKA  
1 DIODA KY 132

31. obr.



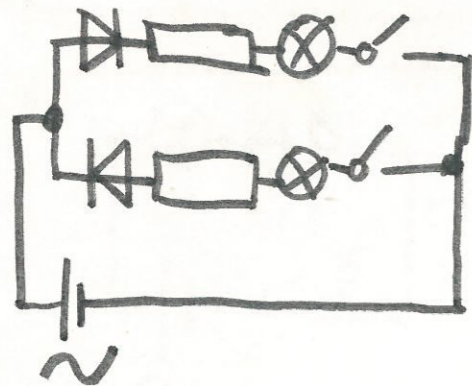
2 ŽIAROVKY  
 1 ODPOR 3M  
 1 DYOÁKY 13  
 2 TLACÍTKA

32. obr.



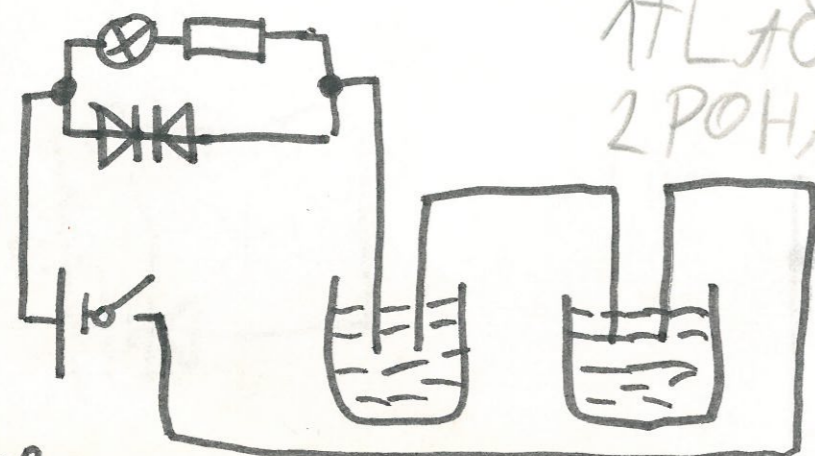
1 ŽIAROVKA  
 1 TLACÍTKO  
 1 ODPOR 1M  
 1 ODPOR 3M

33. obr.



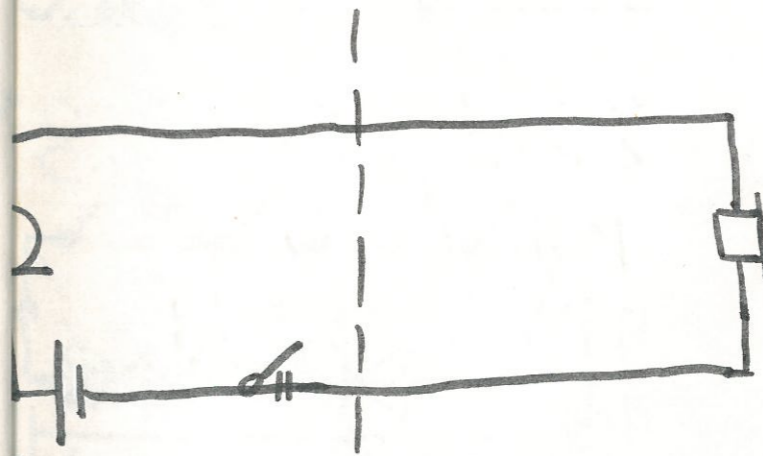
1 ŽIAROVKA  
 2 TLACÍTKA  
 1 ODPOR 1M  
 1 ODPOR 3M  
 2 DYOÁKY 132

34. obr.

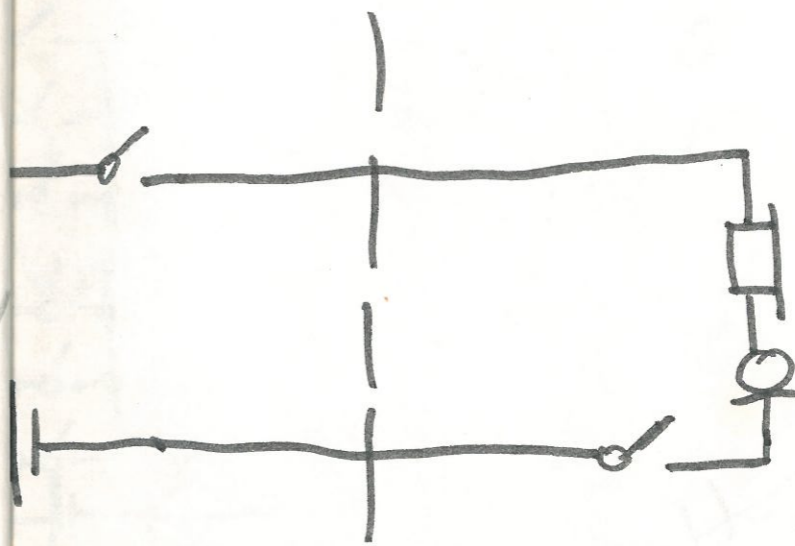


1 ŽIAROVKA  
 1 ODPOR 1M  
 1 TLACÍTKO  
 2 POHAA REVODY  
 2 DYOÁKY

# 2. časť

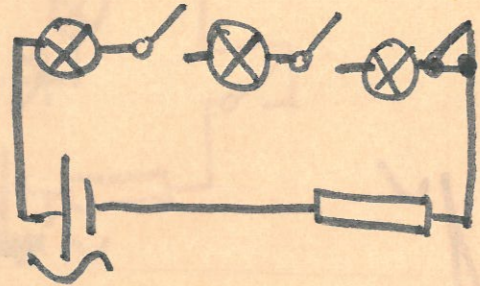


1 MIKROFÓN  
 1 REPRODUKTOR  
 1 TLACÍTKO

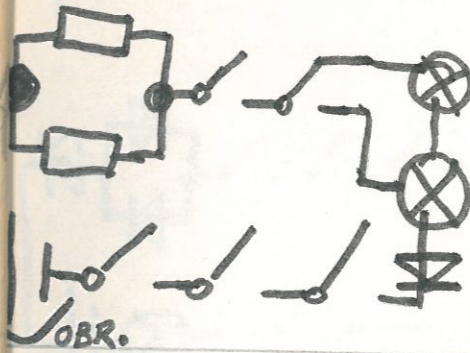


2 REPRODUKTORY  
 2 MIKROFÓNY  
 2 TLACÍTKA

37. obr.

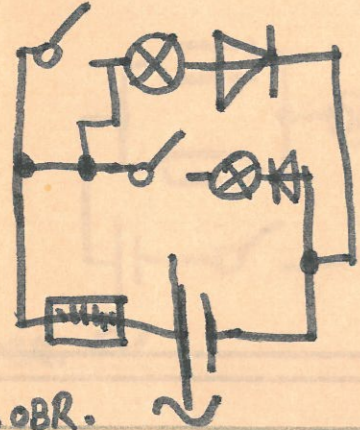


3 ŽIAROVKY  
2 TLAČÍTKA  
1 ODPOR 3M

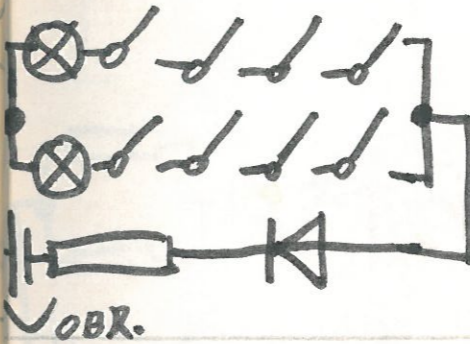


5 TLAČÍTKO  
1 ODPOR 1M  
1 ODPOR 3M

38. obr.

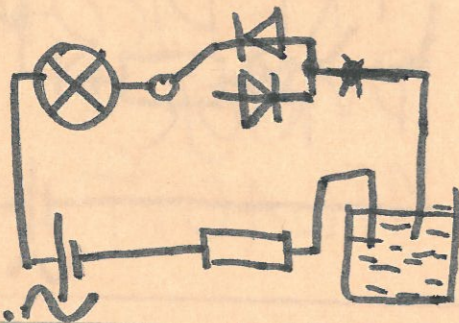


2 ŽIAROVKY  
2 DIÓDY KY 132  
2 TLAČÍTKA  
1 ODPOR 3M

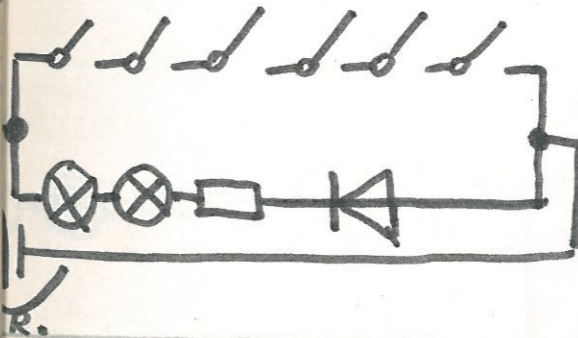


8 TLAČÍTKO  
1 ODPOR 3M

39. obr.

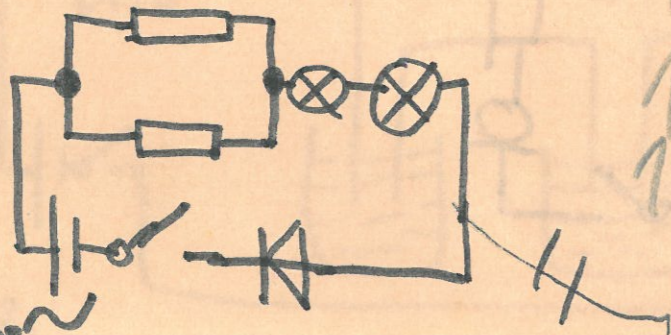


2 DIÓDY KY 13  
1 ODPOR 1M  
1 PŘEPÍNAČ  
1 ŽIAROVKA

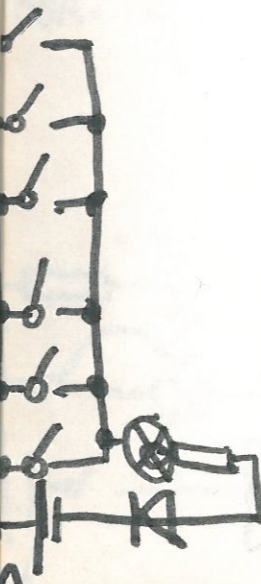


6 TLAČÍTKO  
1 ODPOR 3M

40. obr.



2 ŽIAROVKY  
1 DIÓDA KY 132  
1 TLAČÍTKO  
1 ODPOR 3M  
1 ODPOR 1M



6 TLAČÍTKO  
1 ODPOR 1M